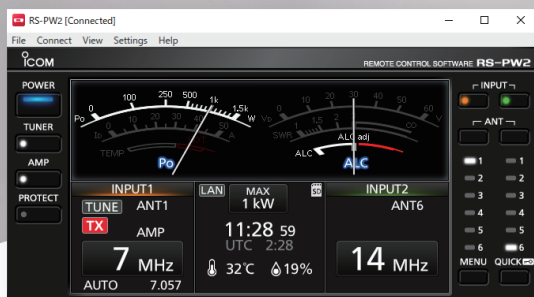
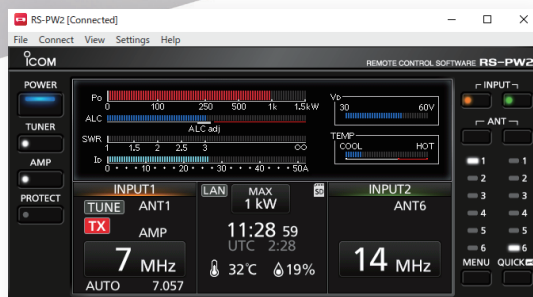




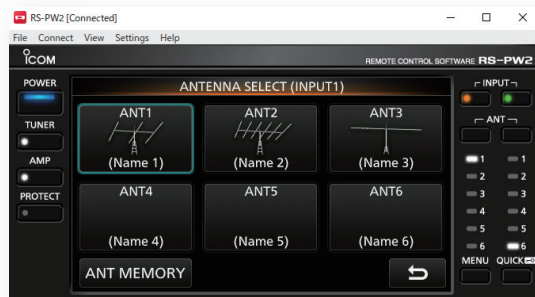
Installation example,
RS-PW2 with optional RS-BA1 Version 2



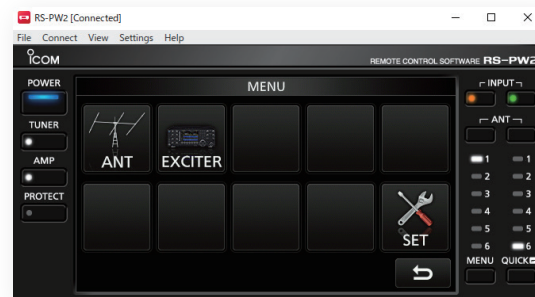
Needle Type Meter*1



Multi-Function Meter*1



Antenna Select*1



Set Menu*1

Remotely Control the IC-PW2 over the Internet/LAN

The RS-PW2 enables full remote control of all IC-PW2 functions, including Power ON/OFF, from your Windows™ PC:

- Control amplifier power ON/OFF
- View various meters (RF power/SWR/ALC level/Vd/Id) with a choice of needle or multi-function type meter
- Select the RF input (Exciter 1 or 2)
- Select the antenna connector (ANT 1 ~ ANT 6)
- Select the Antenna Tuner setting (ON/OFF/Tune)

- Switch Max Power setting (500 W or 1 kW)*

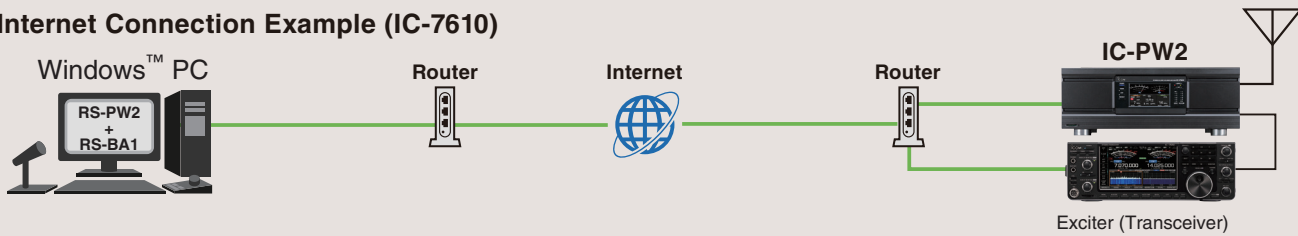
* This item can be set when the IC-PW2, Linear Amplifier is connected to a 180 ~ 264 V AC power source.

- Select the Antenna Memory setting for each frequency band (1.8 MHz ~ 50 MHz)
- Monitor operating frequency and TX/RX status
- Display Temperature and Humidity information

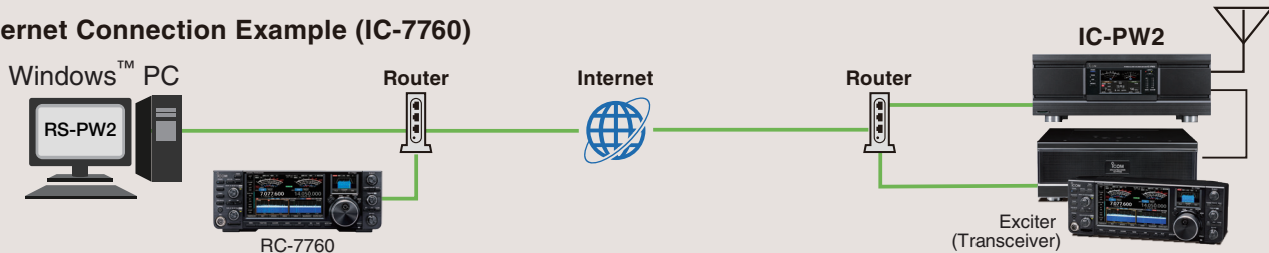
*1 One of these screens is shown at a time.

CONNECTION EXAMPLES

Internet Connection Example (IC-7610)



Internet Connection Example (IC-7760)



MINIMUM SYSTEM REQUIREMENTS

PC (For Remote station)

Operating system	Windows 11 (64-bit), Windows 10 (32/64-bit) (Windows on ARM processors is not supported.)
CPU	1.8 GHz Processor or better (multi-core for Windows 11)
Memory	Windows 11 (64-bit): 4 GB or more, Windows 10 (64-bit): 4 GB or more, Windows 10 (32-bit): 2 GB or more
Disk space (HDD/SSD)	200 MB or more of available disk space
Network data speed	Upload: 50 kbps or higher (to the IC-PW2) Download: 100 kbps or higher (to the client PC) (For optimal performance, we recommend a network environment with adequate and stable connection speed.)
Display resolution	1024 × 600 Pixels or higher
Other	To use this software, the IC-PW2 must be updated to firmware version 1.30 or later.

Download from the Microsoft Store



<https://apps.microsoft.com/detail/9N0TFD23FZ9V>

HF/50 MHz 1 kW LINEAR AMPLIFIER

IC-PW2

- High power and full duty cycle operation
- Increased linearity and clean transmission
- 2 × 6 automatic antenna selector
- Detachable controller
- RX In/Out connectors for multi-band BPF
- Compatible with IC-7760, IC-7610, IC-7300, IC-7100 and IC-718



All stated specifications are subject to change without notice or obligation.

Icom and the Icom logo are registered trademarks of Icom Incorporated (Japan) in Japan, the United States, the United Kingdom, Germany, France, Spain, Russia, Australia, New Zealand and/or other countries. Microsoft and Windows are trademarks of the Microsoft group of companies. All other trademarks are the properties of their respective holders.

Icom Inc.

1-1-32, Kamiminami, Hirano-Ku, Osaka 547-0003, Japan Phone: +81 (06) 6793 5302 Fax: +81 (06) 6793 0013

www.icomjapan.com

Icom America Inc.
www.icomamerica.com

Icom (Europe) GmbH
www.icomeurope.com

Icom France s.a.s.
www.icom-france.com

Your local distributor/dealer:

Icom Canada
www.icomcanada.com

Icom Spain S.L.
www.icomspain.com

Icom (Australia) Pty. Ltd.
www.icom.net.au

Icom Brazil
E-mail: sales@icombrasil.com

Icom (UK) Ltd.
www.icomuk.co.uk

Icom Asia Co., Ltd.
www.icomasia.com