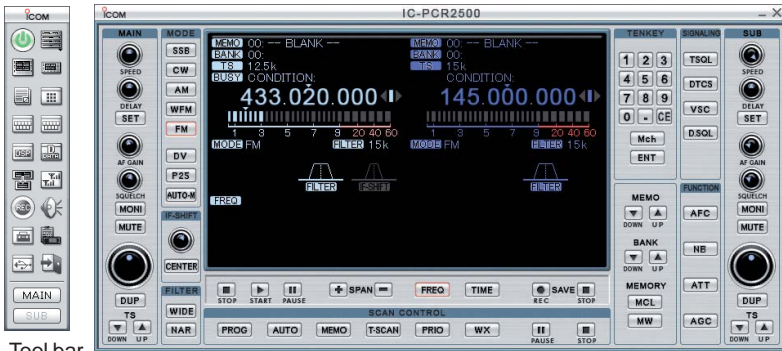


IC-PCR2500

PC controlled dual band, dualwatch, digital mode receiver!



Tool bar

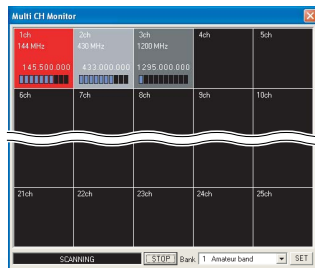
Multi-function receiver screen



Simple screen



Component screen



Multi channel monitor screen

Dualwatch capability*1

The IC-PCR2500 covers 0.01–3299.999 MHz in AM, FM, WFM, SSB, CW, DV and P25 modes on the main receiver, while the sub-receiver can simultaneously cover 50–1300 MHz in AM, FM and WFM modes*2.

*1 Two antennas are required for dualwatch receive. *2 See specification page for available mode and frequency range details.

Digital mode reception

The optional UT-118 D-STAR digital unit and UT-122* P25 digital unit can be installed in the IC-PCR2500. Catch the action in digital communications!



With optional UT-122

* Already installed with some versions.

Diversity receive capability

When two antennas are connected to the IC-PCR2500, it provides diversity reception*. The diversity reception continuously compares the signal strength and selects the better antenna for maintaining good sound and receive quality.

* Available in FM/P25/DV mode between 50–1300MHz only.

Diversity reception is not available when using dualwatch.

3 receiver screens to choose from

Choose the look you want! “Multi-function receiver”, “Component” and “Simple” screens are available.

Multi channel monitor function

You can monitor up to 25 channels. The software tracks the band activity with S-meter levels as channel status is visually represented by three background colors. Simply click the busy channel and the PCR2500 tunes to the active channel.

DSP capability

If you are into weak signal work, the optional UT-106 DSP unit is a must have. This add-on gives you noise reduction and auto notch filter functions to improve the S/N ratio for improving received signal quality.

Bandscope and time-line scope

Along with a 5MHz (Max.) wide range bandscope*, the time-line scope allows you to observe the band condition over the past 100 minutes.

* AF output is muted when setting the bandscope range is between 500kHz and 5MHz or the operating in CW or SSB modes.

Recording function

You can record audio in WAV format directly through the USB port. Skip over hours of channel inactivity with the software’s remote control function that pauses and resumes recording according to the channel activity.



OTHER FEATURES

- VSC ignores unmodulated signals or heterodynes
- CTCSS/DTCS tones and duplex mode operation for monitoring a repeater
- S-meter squelch • Pocket beep function • IF filter selection
- IF shift function (SSB, CW mode only)
- Noise blanker eliminates pulse type noise. (SSB, CW, AM mode only)
- 20dB (approx.) RF attenuator (below 1300MHz)
- Auto memory write scan searches for a signal, and when a signal is detected, the received frequency is automatically stored in PC memory

- AFC function (Auto Frequency Control) automatically follows an FM mode signal when the signal's frequency drifts. (BW: 6kHz or 15kHz)
- AGC function; Fast/slow setting is available
- Weather alert function (U.S.A. and Canada versions only)
- 24-digit DTMF tone decoder • Squelch delay
- Up to 2600 memory channels per file
- U.S.A. Customers check out www.icomreceivers.com for frequency lists in your neighborhood and region. (Based on FCC licensee database.)

SPECIFICATIONS

GENERAL

• Frequency coverage and mode :

	Frequency coverage	Mode
Main receiver	0.010-3299.999MHz*1 (Guaranteed 0.495-3000MHz)	AM, FM, WFM, DV*2, P25*3
	0.495-1300MHz*1	USB, LSB, CW
Sub-receiver	50-1300MHz*1	AM, FM, WFM

*1 Cellular bands are blocked in the U.S.A. version.

*2 Optional UT-118 required. *3 Optional UT-122 required.

France 0.010-29.999*1, 50.200-51.200, 87.500-107.999,
144-146, 430-440, 1240-1300MHz

*1 Main receiver only. Guaranteed range 0.495-29.999MHz

- Usable temperature range : 0°C to +60°C; +32°F to +140°F
- Frequency stability : Less than ±3ppm on the basis of 25°C (0°C to +60°C)
- Tuning steps : 1Hz (minimum)
- Power supply : 12.0V DC ±15%
- Current drain (at 12.0V DC) :
 - Max. audio : Less than 1.5A (Dual mode)
 - Stand-by : 0.85A typ. (Dual mode)
- Antenna Impedance : 50Ω (BNC)
- Dimensions (W×H×D) : 146×41×206 mm
(Projections are not included) : 5¾×1½×8¼ in
- Weight (approx.) : 1350g; 3lb

All stated specifications are subject to change without notice or obligation.

RECEIVER

- Receiver system : Triple-conversion super-heterodyne + Down converter
- Intermediate frequencies : 1st 266.70MHz
2nd 10.70MHz
3rd 450kHz (Except WFM)
- Sensitivity (Less than) :

	SSB, CW	AM	FM	WFM
0.495-1.799MHz	5.0μV	25μV	-	-
1.8-49.999MHz	0.5μV	2.5μV	0.63μV*2	-
50-699.999MHz	0.4μV	2μV	0.5μV	1.4μV
700-1300.000MHz	0.5μV	2.5μV	0.63μV	1.8μV
1300*1-2299.999MHz	-	-	5.6μV	18μV
2300-3000.000MHz	-	-	18μV	56μV

*1 1300.000001MHz *2 28-49.999MHz

SSB, CW BW=2.8kHz, AM BW=6.0kHz at 10dB S/N
FM BW=15kHz, WFM BW=230kHz at 12dB SINAD

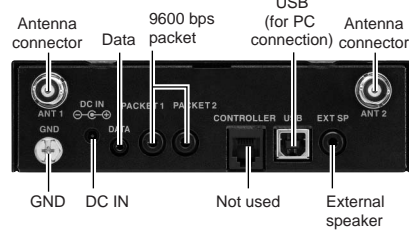
- Selectivity (typical) :
 - SSB, CW, AM : More than 2.8kHz/-6dB
 - SSB, CW, AM, FM : More than 6.0kHz/-6dB
 - FM, AM : More than 15kHz/-6dB
 - FM, AM, WFM : More than 50kHz/-6dB
 - WFM : More than 230kHz/-6dB
- Audio output power : More than 500mW at 10% distortion with an 8Ω load
- External SP connector : 2-conductor 3.5 (d) mm (1/8") Ø/8

PC REQUIREMENTS

- Microsoft® Windows® XP/2000/ME/98SE • USB 1.1 or 2.0
- Intel® Pentium® III 450MHz or faster (Pentium® 4 recommended)
- Hard disk with at least 50 MB of free disk space
- At least 128 MB of memory (256MB or more recommended)
- Display with 1024 × 768 pixel resolution, high color
- CD-ROM or DVD drive is required for software installation
- USB audio dropouts or gaps may occur because of a lack of PC power
- Additional hard disk space is required for recording sound or storing scope data

Turn off the Main unit power switch when not using the IC-PCR2500 while installed in a vehicle. The IC-PCR2500 has standby power consumption that will drain the vehicle battery over a period of time.

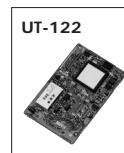
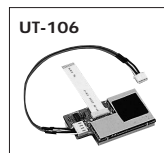
Rear view



OPTIONS

Some options may not be available in some countries. Please ask your dealer for details.

- **UT-106 DSP UNIT**
Provides noise reduction and auto notch functions.
- **UT-108 DTMF DECODER UNIT**
DTMF decode function for Sub-receiver. Either UT-108 or UT-118 can be installed in the receiver.
- **UT-118 D-STAR DIGITAL UNIT**
Provides D-STAR DV mode reception. Either UT-108 or UT-118 can be installed in the receiver.
- **UT-122 P25 DIGITAL UNIT**
Provides APCO P25 digital mode reception.
- **AD-113A/E AC ADAPTOR**
10.5V DC, 1.8A/1.5A (A/E) output. Same as supplied.
- **CP-12L CIGARETTE LIGHTER CABLE**
12V DC, 2A output from 12V cigarette lighter socket.
- **OPC-254L DC POWER CABLE**
For use with an external power supply. (12V DC required)
- **SP-10 EXTERNAL SPEAKER**
For all-round mobile operation.



Supplied accessories

- AD-113A/E* • USB cable • Software CD • Antenna
- (* Depending on version)

Microsoft and Windows are registered trademarks of Microsoft Corporation in the U.S.A. and other countries. Intel and Pentium are trademarks or registered trademarks of Intel Corporation or its subsidiaries in the United States and in other countries. All other trademarks are the properties of their respective holders. Screens on the front page are simulated.

Icom Inc.

1-1-32, Kamiminami, Hirano-ku, Osaka 547-0003, Japan Phone: +81 (06) 6793 5302 Fax: +81 (06) 6793 0013 URL: <http://www.icom.co.jp/world/index.html>

Count on us!

Icom America Inc.

2380 116th Avenue NE,
Bellevue, WA 98004, U.S.A.
Phone : +1 (425) 454-8155
Fax : +1 (425) 454-1509
E-mail : sales@icomamerica.com
URL : <http://www.icomamerica.com>

Icom New Zealand

146A Harris Road, East Tamaki,
Auckland, New Zealand
Phone : +64 (09) 274 4062
Fax : +64 (09) 274 4708
E-mail : inquiries@icom.co.nz
URL : <http://www.icom.co.nz>

Icom (UK) Ltd.

Unit 9, Sea St., Herne Bay,
Kent, CT6 8LD, U.K.
Phone : +44 (0)227) 741741
Fax : +44 (0)227) 741742
E-mail : info@icomuk.co.uk
URL : <http://www.icomuk.co.uk>

Asia Icom Inc.

6F No. 68, Sec. 1 Cheng-Teh Road,
Taipei, Taiwan, R.O.C.
Phone : +886 (02) 2559 1899
Fax : +886 (02) 2559 1874
E-mail : sales@asia-icom.com
URL : <http://www.asia-icom.com>

Your local distributor/dealer:

Icom Canada

Glenwood Centre #150-6165 Highway 17,
Delta, B.C., V4K 5B8, Canada
Phone : +1 (604) 952-4266
Fax : +1 (604) 952-0090
E-mail : info@icomcanada.com
URL : <http://www.icomcanada.com>

Icom (Europe) GmbH

Communication Equipment
Himmelgeister Str. 100,
D-40225 Düsseldorf, Germany
Phone : +49 (0211) 346047
Fax : +49 (0211) 333639
E-mail : info@icom-europe.com
URL : <http://www.icom-europe.com>

Icom France S.a

Zac de la Plaine, 1,
Rue Brindejonc des Moulins BP 5804,
31505 Toulouse Cedex, France
Phone : +33 (5) 61 36 03 03
Fax : +33 (5) 61 36 03 00
E-mail : icom@icom-france.com
URL : <http://www.icom-france.com>

Beijing Icom Ltd.

10C07, Long Silver Mansion, No.88, Yong Ding
Road, Haidian District, Beijing, 100039, China
Phone : +86 (010) 5889 5391/5392/5393
Fax : +86 (010) 5889 5395
E-mail : bjicom@bjicom.com
URL : <http://www.bjicom.com>

Icom (Australia) Pty. Ltd.

A.B.N. 88 006 092 575
Unit 1 / 103 Garden Road,
Clayton VIC 3168 Australia
Phone : +61 (03) 9549 7500
Fax : +61 (03) 9549 7505
E-mail : sales@icom.net.au
URL : <http://www.icom.net.au>

Icom Spain S.L.

Ctra. Rubi, No. 88 "Edificio Can Castanyer"
08190, Sant Cugat del Valles, Barcelona, Spain
Phone : +34 (93) 590 26 70
Fax : +34 (93) 589 04 46
E-mail : icom@icomspain.com
URL : <http://www.icomspain.com>

Icom Polska

Sopot, 3 maja 54, Poland
Phone : +48 (58) 550 7135
Fax : +48 (58) 551 0484
E-mail : icompolkska@icompolkska.com.pl
URL : <http://www.icompolkska.com.pl>