

FCC information

This equipment has been tested and found to comply with the limits for a Class B digital device, pursuant to part 15 of the FCC Rules. These limits are designed to provide reasonable protection against harmful interference in a residential installation. This equipment generates, uses, and can radiate radio frequency energy and, if not installed and used in accordance with the instructions, may cause harmful interference to radio communications. However, there is no guarantee that interference will not occur in a particular installation. If this equipment does cause harmful interference to radio or television reception, which can be determined by turning the equipment off and on, the user is encouraged to try to correct the interference by one or more of the following measures:

- Reorient or relocate the receiving antenna.
- Increase the separation between the equipment and receiver.
- Connect the equipment into an outlet on a circuit different from that to which the receiver is connected.
- Consult the dealer or an experienced radio/TV technician for help.

◆ FCC SDoC

This device complies with part 15 of the FCC rules. Operation is subject to the following two conditions: (1) This device may not cause harmful interference, and (2) this device must accept any interference received, including interference that may cause undesired operation.

Responsible Party

Company Name: Icom America Inc.
Address: 12421 Willows Road NE, Kirkland, WA 98034

U.S. Contact Information

800-USA-ICOM (800-872-4266)
Monday – Friday 7 AM to 5 PM PST

Disposal



The crossed-out wheeled-bin symbol on your product, literature, or packaging reminds you that in the European Union, all electrical and electronic products, batteries, and accumulators (rechargeable batteries) must be taken to designated collection locations at the end of their working life. Do not dispose of these products as unsorted municipal waste. Dispose of them according to the laws in your area.

About CE



Versions of the CS-R6, which have the “CE” symbol on the product, comply with the essential requirements of the EMC Directive, 2014/30/EU and RoHS Directive, 2011/65/EU.

INFORMATION

You can find information regarding product-related legislation in the European region on the Icom portal site.
<https://portal.icomjapan.com/>



Below statement is for UKCA purpose only

United Kingdom Authorised Importer: Icom (UK) Ltd.
Address: Blacksole House, Altira Park, Herne Bay, Kent, CT6 6GZ, U.K.

To obtain the UKCA Declaration of Conformity, please contact Icom UK Limited by email at info@icomuk.co.uk or alternatively call + 44(0) 1227 741741.



INSTRUCTIONS

CLONING SOFTWARE CS-R6

System requirements

(As of July 2025)

To use the software, the following hardware and software are required.

• Operating System (OS)

- Microsoft Windows 11 (64 bit)
- Microsoft Windows 10 (32/64 bit)
 - ① Except for Windows on ARM.
 - ① The instructions are based on using Windows 11.
 - ① Icom does not guarantee that this software will work correctly on all PCs with the above OS installed.
 - ① The displays, indications, or operations may differ slightly, depending on your system settings, type of OS, and its service pack level.

• USB port


A USB 1.1 or 2.0 port

• Cable (Purchase separately)

OPC-478UC-1 PROGRAMMING CABLE OR
OPC-478UD PROGRAMMING CABLE

TIP: When using the cable, you must install a USB driver. See the cable's instruction manual for details.

Programming information

- To prevent data loss, read all the receiver's data before entering or editing parameters using the software, even if the receiver is factory fresh. Click , or <Clone> in the top menu of the software, and then select “Read ← Receiver” to start reading.
- While reading or writing entered data, **NEVER** turn OFF the receiver or the PC, and **NEVER** disconnect the cable. Otherwise, the data could be lost or corrupted.

TIP: Refer to the software's Help file of the cloning software for assistance with the functions or settings. To open the Help file, click “Help” in the top menu of the cloning software and select “Contents,” or simply push the [F1] key of the PC's keyboard.

Disclaimer

- The included USB flash drive does not have the Write Protection, so formatting it will erase all data. Also, USB flash drives have a certain lifetime and you may not be able to read or write data after a long period of use. We recommend making a backup file of the data on the USB flash drive onto another device.
- Icom is not responsible for any lost profits, or data, or consequential, special, indirect, or incidental damages.

Keep the USB flash drive away from children. Accidental swallowing may cause choking.

Icom and the Icom logo are registered trademarks of Icom Incorporated (Japan) in Japan, the United States, the United Kingdom, Germany, France, Spain, Russia, Australia, New Zealand, and/or other countries.

Microsoft and Windows are trademarks of the Microsoft group of companies.

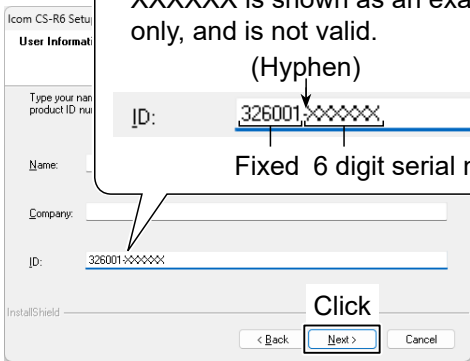
All other products or brands are registered trademarks or trademarks of their respective holders.

Software installation

① When installing the software, confirm Windows has completed its startup, and then sign in as the **administrator**.

1. Confirm no other applications are running.
2. Insert the USB flash drive into the PC.
3. Double-click the “setup.exe” stored in the folder on the USB flash drive.
① If “User Account Control” is displayed, click <Yes> to continue.
4. “Choose Setup Language” is displayed. Select ‘English’ (or ‘Japanese’) and then click <Next>.
5. “Welcome to the InstallShield Wizard for CS-R6” is displayed. Click <Next>.
6. “User Information” is displayed. Enter your name, your company name (optional), and the ID number, as described below. After entering, click <Next>.

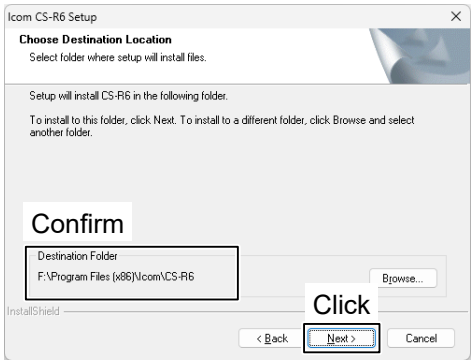
Example:
When the serial number is XXXXXX*, enter “326001-XXXXXX” as the ID number.
* XXXXXX is shown as an example only, and is not valid.
(Hyphen)
Fixed 6 digit serial number



- ID: 326001-(6 digit serial number)
- The serial number is on the label of the USB flash drive.



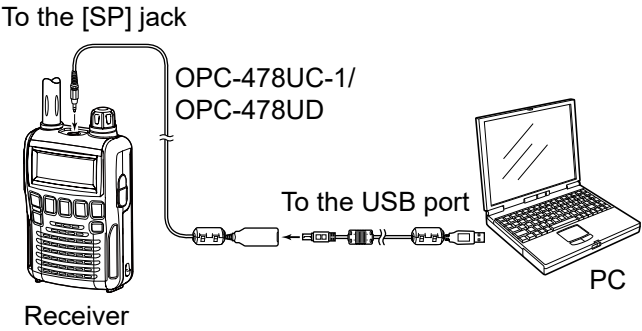
7. “Choose Destination Location” is displayed. After confirming the “Destination Folder,” click <Next>.



- ① If desired, click <Browse...> to select another destination folder before clicking <Next>.
8. After the installation has completed, “InstallShield Wizard Complete” is displayed. Click <Finish>.
9. A “CS-R6” folder is created in the Windows Start menu, and a shortcut icon is added to your desktop.

Connection

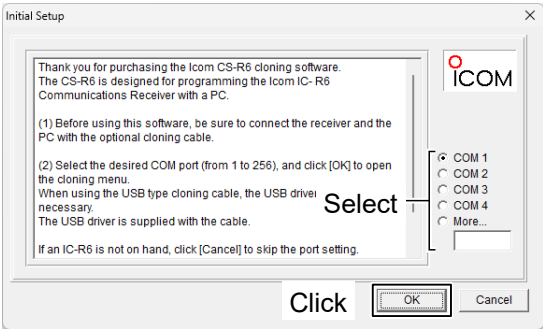
All cloning operations are performed from the PC’s keyboard.
Connect the cable as illustrated below, and then turn ON the receiver.



Initial setup screen

After starting up the CS-R6, “Initial Setup” is displayed.
Before using the CS-R6, read the instructions thoroughly, and enter the correct COM port number between 1 and 256, and then click <OK> to open the cloning menu.
Without the receiver connected, click <Cancel> to skip the COM port setting and continue programming the software.

NOTE: When programming the software without the receiver connected, some items will not be displayed on the setting screen, and therefore you cannot program them.



- ① Open Device Manager and confirm the driver availability and the port number on the Device Manager screen. See the cable’s instruction manual for details.