

This RS-M500 is an iOS/Android application that is used for remote operation of the IC-M510/IC-M510E through a WLAN connection. This instruction document shows how to use the application.

① In this manual, the IC-M510 and IC-M510E, including the EVO versions, are described as "IC-M510."

Table of contents

Operating notes	1	Inter communication operation	7
System requirements	2	◇ Talking in the Intercom mode	7
Find and download the application	2	The Settings menu	8
Preparation	3	◇ SETTINGS	8
Starting up the application	3	◇ CONNECTION	8
Application screen overview	4	◇ ABOUT	9
Remotely operating the transceiver	5		
◇ Transmitting and receiving	5		
◇ Adjusting the squelch	5		
◇ Scan operation	6		
◇ Using Dualwatch or Tri-Watch	6		

Operating notes

- Confirm permissions, such as accessing the microphone on your mobile device to operate the RS-M500. See your device's manuals for details.
- ① Some permissions may change, depending on the data device version.
- The RS-M500 functions only when the application is active (displayed in the foreground.)
When the application is running in the background, you cannot receive a call.
- When you receive a call from a telephone, the sound will be muted and <PTT> cannot be operated.
- The application supports only the portrait orientation. It does not support Auto Rotate.

DISCLAIMER

- This application is not designed for Digital Selective Calling (DSC) communications. As a result, you cannot operate DSC call using this application.
- The application may not work properly, depending on the OS version, installed applications, signal strength, or other reasons.
- Icom is not responsible for any lost profits, or data, or consequential, special, indirect, or incidental damages.

Icom and the Icom logo are registered trademarks of Icom Incorporated (Japan) in Japan, the United States, the United Kingdom, Germany, France, Spain, Russia, Australia, New Zealand, and/or other countries.
Android and Google Play are registered trademarks or trademarks of Google LLC, and Google is registered trademark or trademark of Google, LLC.

IOS is a trademark or registered trademark of Cisco in the U.S. and other countries and is used under license.

iPadOS is a trademark of Apple Inc., registered in the U.S. and other countries and regions.

App Store is a service mark of Apple Inc.

All other products or brands are registered trademarks or trademarks of their respective holders.

System requirements

The application can be used with the following systems. (As of June 2025)

For the Android:

Android version 8.0 or later

① The RS-M500 has been tested with Android 8.1, 9.0, 10.0, 11.0, 12.0, 13.0, 14.0, and 15.0.

For the iOS:

iOS version 12 or later, iPadOS version 13 or later

① The RS-M500 has been tested with iOS 12.x, 13.x, 14.x and iPadOS 13.x.

① In this manual, the iOS and iPadOS are described as "iOS."

NOTE:

- This Instruction document is based on using RS-M500 version 1.0.3 and Android 9.0. Depending on the application version, OS version, or settings, the indications or items may differ.
- The screen shots in these Instructions are just examples, so the contents may differ from the actual ones.

Find and download the application

Android device:

1. Touch "Play Store."
2. Enter "RS-M500" in the search field.
3. Touch "Q."
- "RS-M500" will be displayed as the search result.
① You may need to enter "RS-M500" as a complete word to get the search result.
① If your Android device does not support the RS-M500, "RS-M500" may not appear as the search result.
4. Touch "RS-M500."
• Displays the introduction screen of the RS-M500.
5. Touch <INSTALL>.
• Installation starts.
• After the installation is finished, the RS-M500 icon is displayed on the screen.

iOS device:

1. Touch "App Store."
2. Touch "Q."
3. Enter "RS-M500" in the search field.
• "RS-M500" will be displayed as the search result.
① You may need to enter "RS-M500" as a complete word to get the search result.
① If your iOS device does not support the RS-M500, "RS-M500" may not appear as the search result.
4. Touch "RS-M500."
5. Touch <GET>.
• Installation starts.
• After the installation is finished, the RS-M500 icon is displayed on the screen.

Preparation

Before starting the application, make the following settings on the transceiver and your mobile device.

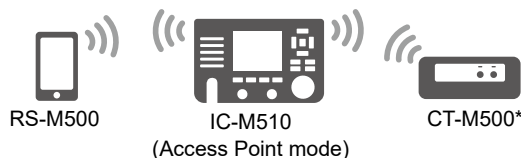
Step 1.

Complete the WLAN settings on the IC-M510

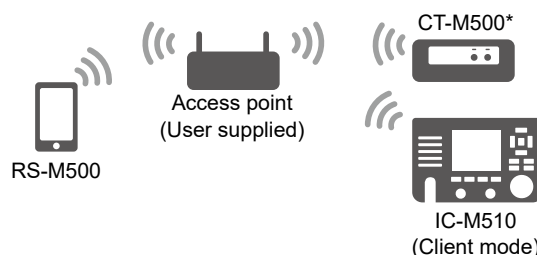
Enable the WLAN function and connect the IC-M510 to a WLAN network.

- ① You can set the IC-M510 WLAN in the Access Point mode or the Client mode, as shown to the right. Refer to the IC-M510 instruction manual for details on the WLAN settings.

• In the Access Point mode



• In the Client mode



* CT-M500 is not usable with the EVO versions.

Step 2.

Connect your mobile device to the WLAN

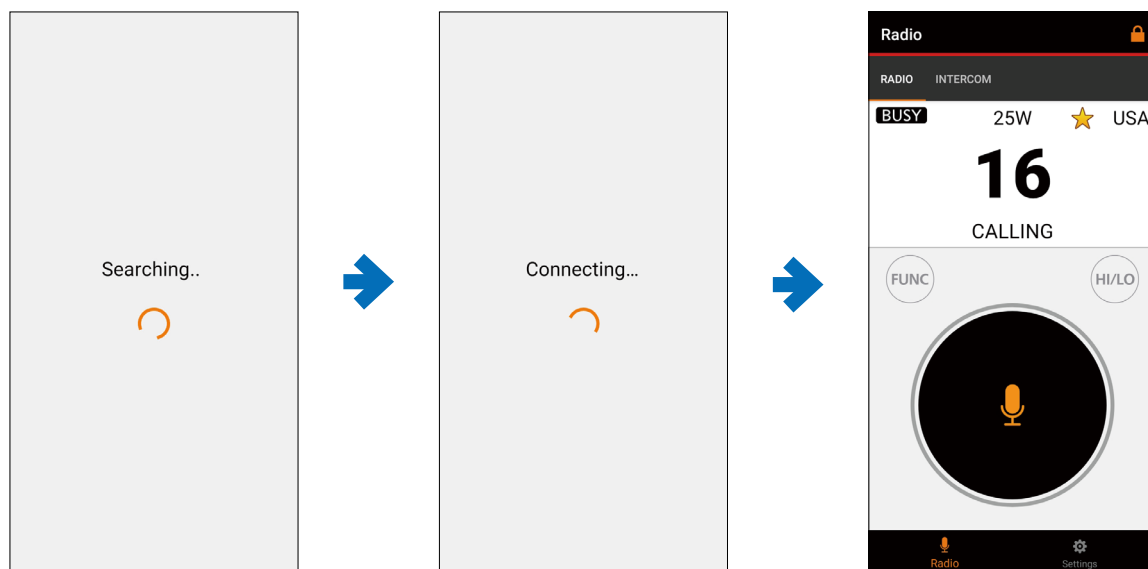
From the Android or iOS Wireless LAN settings on your mobile device, search and connect to the same network as the IC-M510.

Starting up the application

When you start up the RS-M500, the CONNECTION screen is displayed and starts searching for the connectable transceivers through the WLAN.

When only one transceiver is found in the network:

The application automatically connects to the transceiver, and then the “Radio” screen will be displayed.

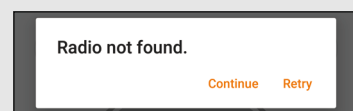


When two or more transceivers are found:

The connectable transceivers are listed. Touch a transceiver name that you want to connect to.

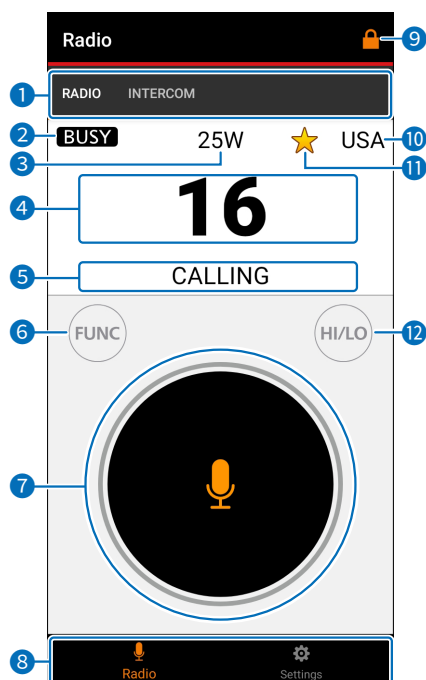
- The application connects to the selected transceiver, and then the “Radio” screen will be displayed.

NOTE: If an error message is displayed, check that the WLAN is properly set and connected, the transceiver is turned ON, and then touch “Retry.” Touch “Continue” to start the application without connecting to a transceiver.



Application screen overview

When the application has been connected to a transceiver, the “Radio” screen is displayed.



1 Submenus

Touch to move between the submenus.

2 Status icon

Displays the transmit or receive status.

3 Output power

Displays the current output power.

4 Channel number

Displays the current channel number.

Touch and select, or flick in 4 directions to change the channel up or down.

5 Channel name

Displays the current channel name.

① While scanning, “SCAN” is displayed instead of the channel name.

① When using the Dualwatch or Tri-Watch function, “DUAL XX” or “TRI XX” (XX: channel number) is displayed instead of the channel name.

6 <FUNC> (pp. 5, 6)

Touch and select a function you want to use.

① Depending on the transceiver version or presetting, <SQL> is displayed instead of <FUNC>.

7 <PTT> (🎤) (pp. 5, 7)

Long touch to transmit and release to receive.

8 Menu icons

Touch to move between the menus.

Menu	Description
Radio	Used for the audio communication operation. (p.5)
Settings	Used to customize the application settings. (p.8)

9 Touch Lock <🔒> (p.5)

Locks the screen to keep receiving.

① Swipe down the screen to return to the Remote Operating screen.

10 Channel group

Displays the current channel group.

① The channel group can be changed only on the transceiver.

11 Favorite channel ★

Displayed when a favorite channel is selected.

12 <HI/LO>

Touch to toggle the output power between 25 W (High) and 1 W (Low.)

Remotely operating the transceiver

You can remotely operate the IC-M510 using this application.

NOTE: Only one transceiver or an application can be operated at a time. While the transceiver is operated by itself, with a command microphone, or on another RS-M500, a dialog is displayed and the application cannot be used.

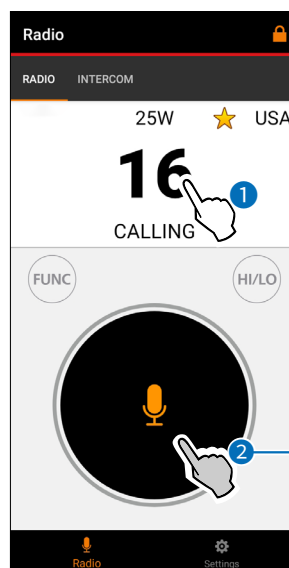
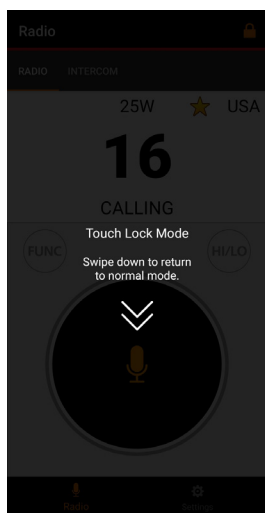
◇ Transmitting and receiving

1. Touch the channel number and select a channel.
① You can also scroll up or down the channel by flicking the channel number up, down, left, or right.
2. Long touch <PTT> and speak at your normal voice level.
3. Release <PTT> to receive.

TIP: Touch Lock mode

When you want to keep the application receiving only, touch <🔒> in the upper right corner of the screen to enter Touch Lock mode.

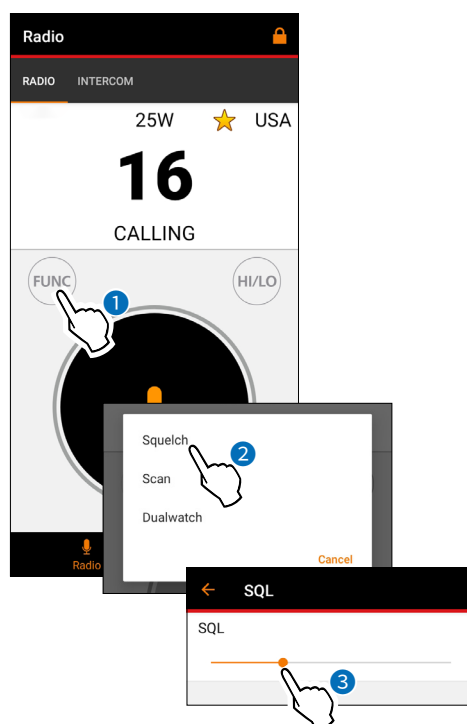
- ① Swipe down the screen to exit the Touch Lock mode and return to the Remote Operating screen.



◇ Adjusting the squelch

The squelch enables the audio to be heard only while receiving a signal that is stronger than the set level. A higher level blocks weak signals, so that you can receive only stronger signals. A lower level enables you to hear weak signals.

1. Touch <FUNC>.
① Depending on the transceiver version or presetting, the icon may be <SQL>. In this case, touch <SQL> and go to the step 3.
2. Touch "Squelch."
• The SQL adjusting screen is displayed.
3. Adjust the squelch level.
4. Touch <←> to return to the Remote Operating screen.

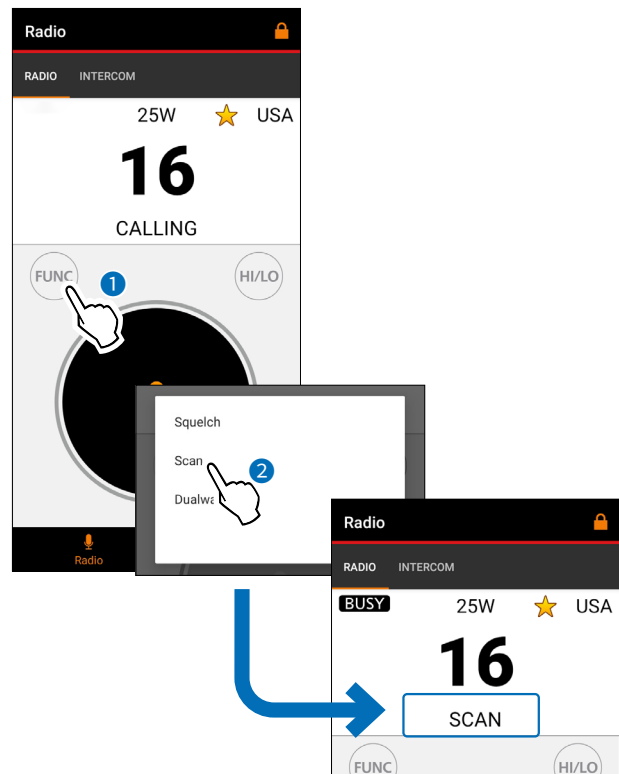


◇ Scan operation

You can remotely start and stop the Scan function on the application.

- ① You can set the Scan type and Favorite channels only on the transceiver. See the transceiver's manual for details on setting Scan function.
- ① This function may not be usable, depending on the transceiver version or presetting.

1. Touch <FUNC>.
 2. Touch "Scan."
 - Returns to the operating screen, and then starts scanning.
 - While scanning, "SCAN" is displayed instead of the channel name.
- ① Repeat steps 1 and 2 to stop the Scan.

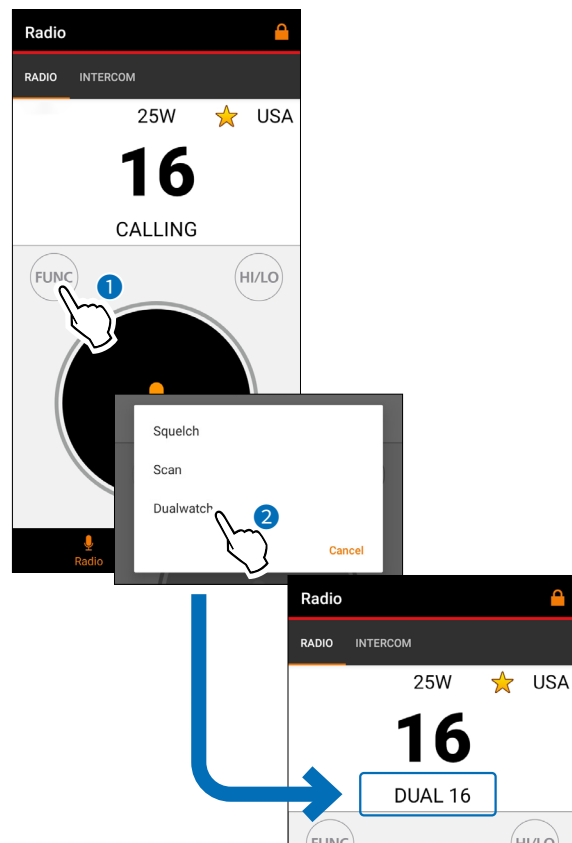


◇ Using Dualwatch or Tri-Watch

You can remotely start and stop Dualwatch or Tri-Watch on the application.

- ① You can set Dualwatch or Tri-Watch details only on the transceiver. See the transceiver's manual for details on setting Dualwatch or Tri-Watch function.
- ① This function may not be usable, depending on the transceiver version or presetting.

1. Touch <FUNC>.
 2. Touch "Dualwatch" or "Tri-watch."
 - ① The displayed menu may differ, depending on the transceiver settings.
 - Returns to the operating screen, and then starts Dualwatch or Tri-watch.
 - While Dualwatch or Tri-watch is ON, "DUAL XX" or "TRI XX" (XX: channel number) is displayed instead of the channel name.
- ① Repeat steps 1 and 2 to stop Dualwatch or Tri-watch.



Inter communication operation

The Intercom (inter communication) function enables you to communicate between the deck and the cabin using an internal communication between the application and the transceiver or the command microphone, if connected.

① You cannot use the Intercom between the applications.

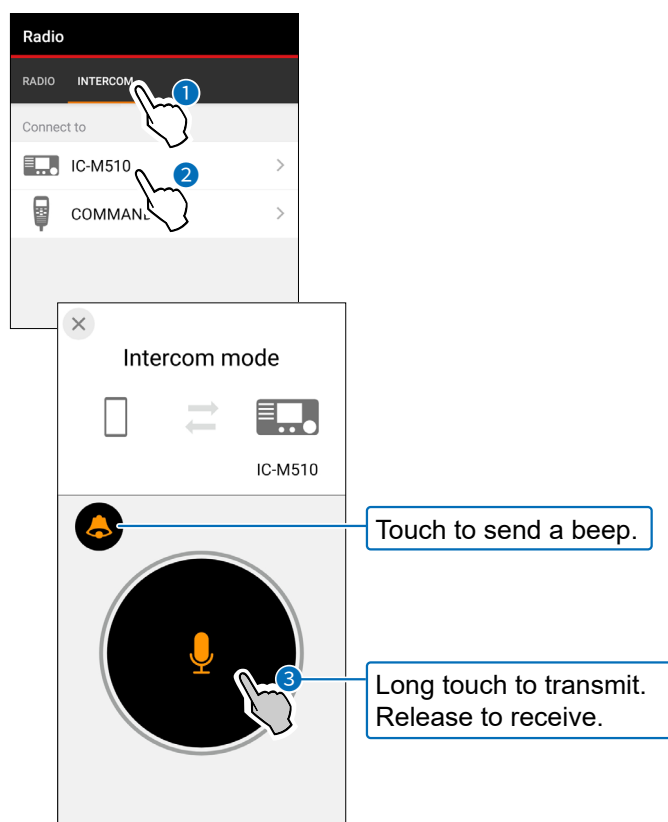
① The Intercom function can be used only when the Intercom function is enabled on the transceiver.

NOTE: While using the Intercom function:

- Transmit is disabled.
- The received call audio is muted.
- Operation is disabled on devices other than the two that are using the Intercom function.

◇ Talking in the Intercom mode

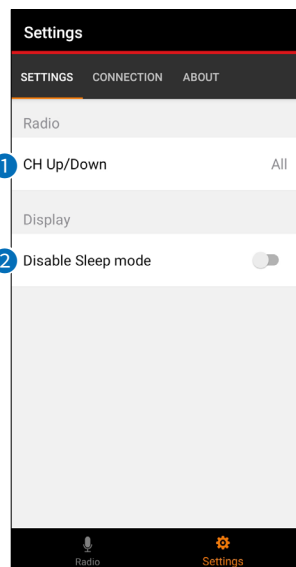
1. On the Radio screen, touch “INTERCOM” to enter the Intercom mode.
 - The Device list is displayed.
2. Touch the device you want to talk to.
 - The “Intercom mode” screen is displayed.
3. Long touch <PTT> and speak at your normal voice level.
 - ① Touch <🔔> to send a beep sound.
4. Release <PTT> to receive.
5. When the conversation is finished, touch <X> in the upper left corner of the screen to exit the Intercom mode.
 - Returns to the Device list.
6. Touch “RADIO” to return to the Remote Operating mode.



The Settings menu

You can customize the application settings in the Settings menu.

◇ SETTINGS



① CH Up/Down

Select the channels to scroll up and down by flicking the channel number.

Favorite: Channel scrolls up and down through only the Favorite channels.

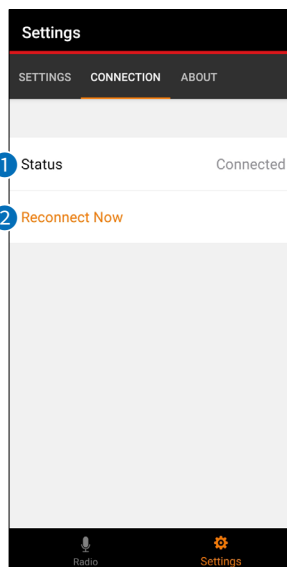
All: Channel scrolls up and down through all channels.

② Disable Sleep mode

Select whether or not to disable the Sleep mode of your mobile device when the RS-M500 is active.

CAUTION: If you turn ON this setting, the application will consume more battery current on your mobile device.

◇ CONNECTION



① Status

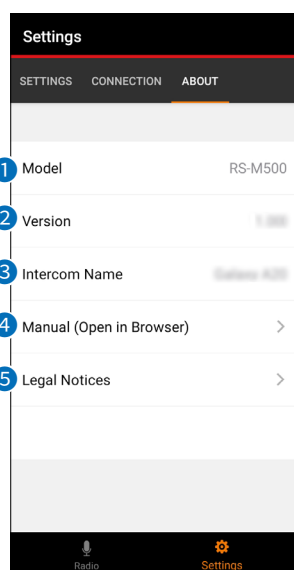
Displays the wireless LAN connection status between the mobile device and the transceiver.

② Reconnect Now

Searches and connects to an available transceiver. Use this option to reconnect to the transceiver, or connect to another transceiver.

① See page 3 for details on the WLAN connection procedure.

◇ ABOUT



① Model

Displays the application name.

② Version

Displays the application software version.

③ Intercom Name

Displays the name of your mobile device that are used in the Intercom mode.

① The Intercom Name can be edited only on the transceiver.

④ Manual (Open in Browser)

Opens the manual download page of the Icom website on your web browser application.

⑤ Legal Notices

Displays the information on the open-source software used in this application.