

PICTURE UTILITY SOFTWARE  
**ST-4001W**

This software is a Windows software to crop an image used for the Share Picture function of a D-STAR transceiver, and transfer images to the transceiver.

- Photos/images saved on the Windows PC can be converted into the format used for the Share Picture function of the D-STAR transceiver.
- You can crop the image and enter text such as a call sign.
- The cropped image can be transferred through a network to a D-STAR transceiver.
- You can also save the cropped image as a file.

## System requirements

**Operating system:**

Windows 11 (64 bit)

Windows 10 (32/64 bit)

① Except for Windows on ARM

① This instruction document is based on ST-4001W version 1.00 and Windows 10.

Display indications may differ, depending on the PC's OS.

**Compatible transceiver:**

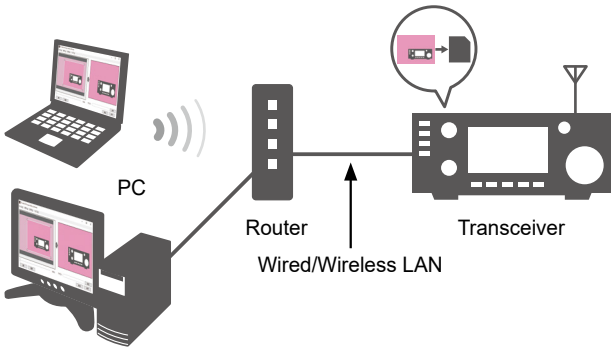
- IC-9700 with firmware version 1.20 or later
- IC-705
- IC-905
- ID-52A PLUS/ID-52E PLUS\*
- ID-52A/ID-52E\*

\* Incompatible with the Network function.

**To transfer a picture to the transceiver:**  
Using this application and the Network function enables you to transfer a picture to the transceiver through a LAN. The transferred picture is saved on the SD card or microSD card that is inserted into the transceiver.

To use this function:

- Connect your PC and a transceiver to the same LAN.
- Insert an SD card or microSD card to the transceiver.



**To use a picture without transferring it to the transceiver:**  
When your transceiver is incompatible with the Network function, or you cannot connect your PC and a transceiver to the same LAN, you can save the cropped image to a Picture folder on an SD card or microSD card and use it later.

Icom and the Icom logo are registered trademarks of Icom Incorporated (Japan) in Japan, the United States, the United Kingdom, Germany, France, Spain, Russia, Australia, New Zealand, and/or other countries.  
Microsoft and Windows are trademarks of the Microsoft group of companies.  
All other products or brands are registered trademarks or trademarks of their respective holders.  
This product includes "LibJpeg.Net" open source software, and is licensed according to the open source software license.

**LibJpeg.Net**  
License  
This software is copyright (C) 2008-2018, Bit Miracle  
<http://www.bitmiracle.com>  
All rights reserved.

Redistribution and use in source and binary forms, with or without modification, are permitted provided that the following conditions are met:

- Redistributions of source code must retain the above copyright notice, this list of conditions and the following disclaimer.
- Redistributions in binary form must reproduce the above copyright notice, this list of conditions and the following disclaimer in the documentation and/or other materials provided with the distribution.
- Neither the name of the Bit Miracle nor the names of its contributors may be used to endorse or promote products derived from this software without specific prior written permission.

THIS SOFTWARE IS PROVIDED BY THE COPYRIGHT HOLDERS AND CONTRIBUTORS "AS IS" AND ANY EXPRESS OR IMPLIED WARRANTIES, INCLUDING, BUT NOT LIMITED TO, THE IMPLIED WARRANTIES OF MERCHANTABILITY AND FITNESS FOR A PARTICULAR PURPOSE ARE DISCLAIMED. IN NO EVENT SHALL BIT MIRACLE BE LIABLE FOR ANY DIRECT, INDIRECT, INCIDENTAL, SPECIAL, EXEMPLARY, OR CONSEQUENTIAL DAMAGES (INCLUDING, BUT NOT LIMITED TO, PROCUREMENT OF SUBSTITUTE GOODS OR SERVICES; LOSS OF USE, DATA, OR PROFITS; OR BUSINESS INTERRUPTION) HOWEVER CAUSED AND ON ANY THEORY OF LIABILITY, WHETHER IN CONTRACT, STRICT LIABILITY, OR TORT (INCLUDING NEGLIGENCE OR OTHERWISE) ARISING IN ANY WAY OUT OF THE USE OF THIS SOFTWARE, EVEN IF ADVISED OF THE POSSIBILITY OF SUCH DAMAGE.

This software is based in part on the work of the Independent JPEG Group  
Copyright (C) 1991-2016, Thomas G. Lane, Guido Vollbeding.  
All Rights Reserved except as specified below.

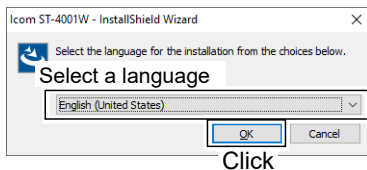
# Installation

## To install:

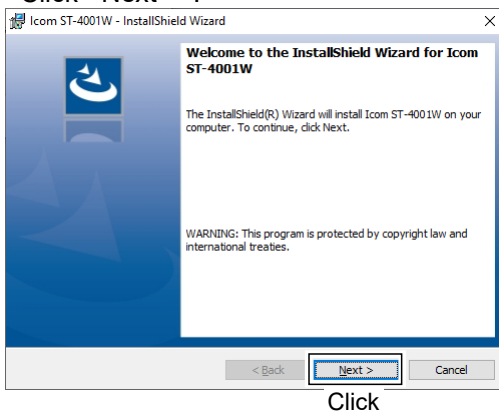
- Confirm Windows has completed its startup.
- Sign in as the **administrator**.
- Be sure no other applications are running.

① These instructions are based on using Windows 10.

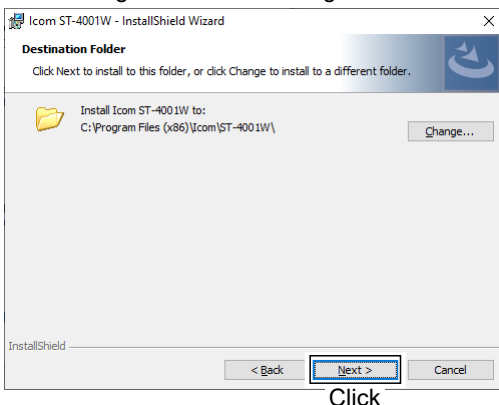
1. Download the ZIP file from the Icom website and extract it to a new location.
2. Double click the executable file (.exe).  
① If the “User Account Control” dialog is displayed, click <Yes>.
3. Select a language, and then click <OK>.



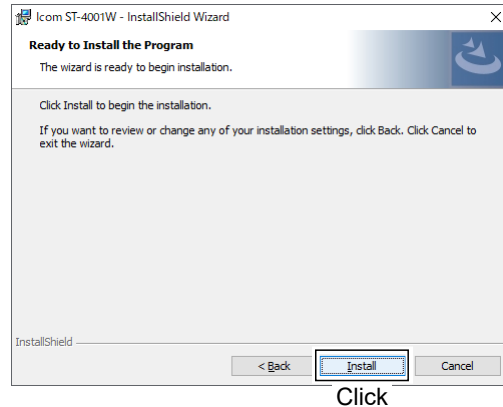
4. Click <Next >>.



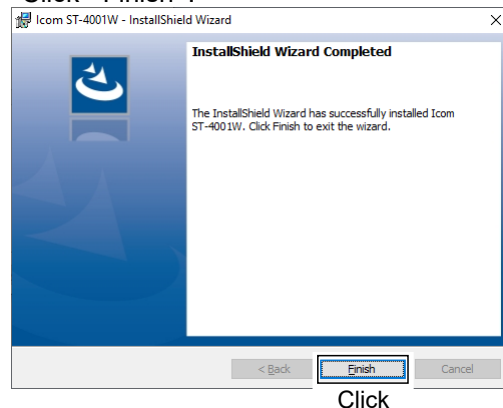
5. Click <Next >>.  
① To select another destination folder, click <Change...> before clicking <Next >>.



6. Click <Install>.



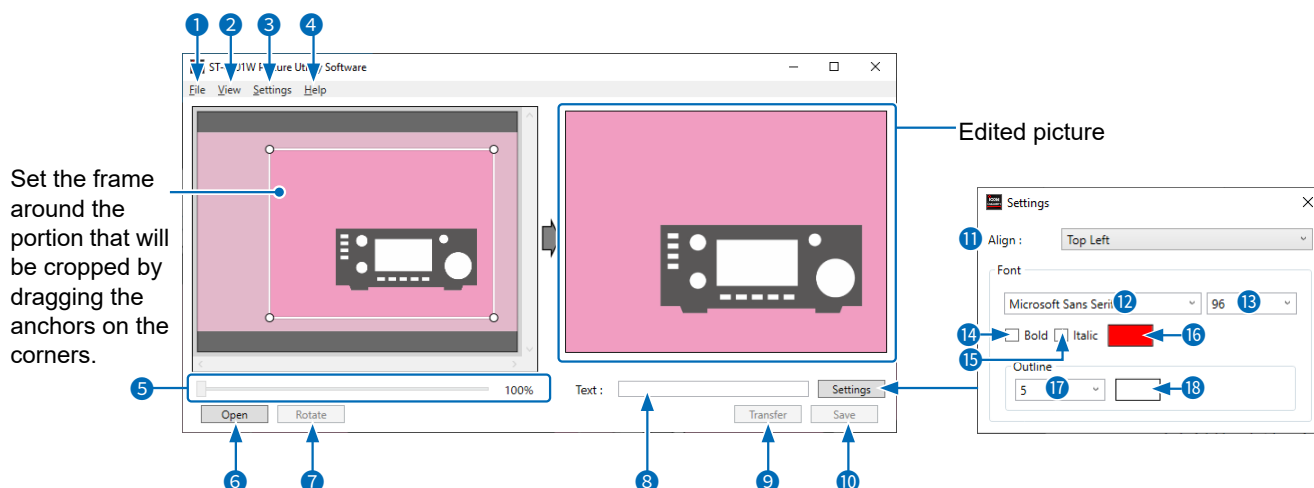
7. Click <Finish>.



- ① The “ST-4001W” file is created in the Windows Start menu, and a shortcut icon is created on the desktop.
- ① Double click the icon to open the ST-4001W.

**NOTE:** To uninstall, use the “Apps & features” in the “System” menu.  
To get started, click on Start > Settings > Apps > Apps & features.

# Operating screen



## 1 File

Open (Ctrl+O): Click to open a picture file.  
 Save (Ctrl+S): Save the current settings using a different file name, or to a different location.  
 Exit: Click to close the software.

## 2 View

Language: Click to select the language to be displayed on the Language list screen.

## 3 Settings

Transfer Settings: Enter the IP Address or Network Name to transfer a picture to the transceiver through a LAN.

## 4 Help

About: Click to open the About window and displays the version number.

## 5 Zoom bar

Click to zoom in or zoom out the picture.

## 6 Open

Click to open the picture that you want to edit.

## 7 Rotate

Click to rotate the picture clockwise. The picture turns 90 degrees.

## 8 Text

Enter text you want to add to the picture.

## 9 Transfer

Click to transfer the picture to the transceiver.

## 10 Save

Click to save the edited picture.

## 11 Align

Select the display position of the text.

## 12 Font

Select the font.

## 13 Size

Select the font size of the text.

## 14 Bold

Select whether or not to make the text bold.

## 15 Italic

Select whether or not to make the text italic.

## 16 Color

Select the text color.

## 17 Outline

Select the outline width of the text.

## 18 Outline Color

Select the outline color of the text.

# Operation

## Cropping a picture

1. Click to <Open>.
  - The Select Picture screen is displayed.
  - ① You can also select the picture by dragging and dropping it from a folder.
2. Select where the picture you want to edit is stored.
3. Set the frame around the portion that will be cropped by dragging the anchors on the corners.
  - The edited picture is displayed on the right side.

## Adding text to the picture

1. Enter text.
2. Click <Settings>.
3. Set the text font, size, color, and so on.
  - ① See page 3 for the details.

## Saving the picture on the PC

1. Click <Save>.
  - The Save as window is displayed.
2. Select the destination to save the picture.
  - ① If you change the file name, enter one of up to 23 characters.

## Transferring the picture to the transceiver

1. Click "Transfer Settings" in the Settings menu.
2. Enter the transceiver's IP address or Network Name.
  - ① See the transceiver's manual about how to check its IP address.
3. Click <OK>.
4. Click <Transfer>.
5. Operate the transceiver following the displayed dialog.
  - ① To cancel transfer, click <Cancel>.

### TIP: About IP address

An IP address is a numerical label that is assigned to devices participating in a LAN.

When the transceiver's DHCP setting is set to ON, the DHCP server assigns a dynamic IP address to your transceiver. Therefore, entering Network Name is recommended because the PC's OS has to match the IP address each time you transfer a picture to the transceiver.

### NOTE:

If you cannot transfer the picture, check the following:

#### On the transceiver

- The transceiver is turned ON.
  - ① You cannot transfer the picture if the transceiver is in the Standby mode.
- The transceiver and PC are connected to the same LAN.
- The transceiver's firmware is the latest.
- An SD card or microSD card is inserted into the transceiver.
- The transceiver is in a normal operating mode.
  - ① The transceiver cannot receive the picture in special modes, such as the firmware update mode, clone mode, setting save mode, import or export mode, or touch screen calibration mode.
- Operate the transceiver following to a displayed dialog.

#### On the PC

- The transceiver's correct IP address or Network Name is entered in Transfer Settings.