

APPLICATION SOFTWARE ST-ID50W

This software is used to crop an image used for the Share Picture function of the ID-50A/ID-50E transceiver, transfer images to the transceiver, and view the received image.

- Photos saved on the Windows PC can be converted into the format used for the Share Picture function of the D-STAR transceiver.
- You can crop the image and enter text such as a call sign.
- The cropped image can be transferred to a D-STAR transceiver.
- You can load and view the received image.
- You can also save the cropped image as a file.

System requirements

Operating system:

Windows 11 (64 bit)

Windows 10 (32/64 bit)

① Except for Windows on ARM

① This instruction document is based on ST-ID50W version 1.00 and Windows 10. Display indications may differ, depending on the PC's OS.

USB port:

A USB 1.1, 2.0, or 3.0 port

USB cable (User supplied):

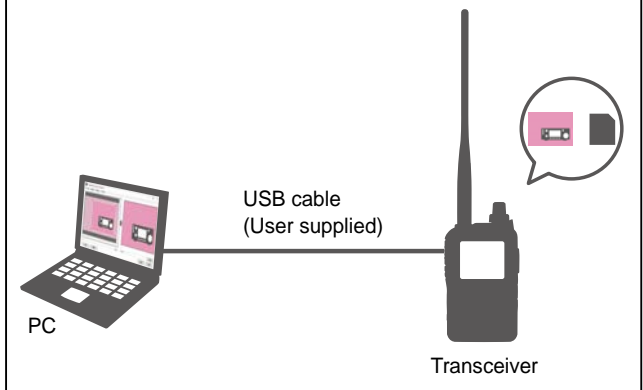
USB Type-C Cable (Data communication compatible)

① Use a proper cable according to your PC's USB port.

To transfer a picture to the transceiver:

With this software, you can transfer a picture to the transceiver through a USB cable. The transferred picture is saved on the microSD card that is inserted into the transceiver.

① Confirm a microSD card is inserted to the transceiver.



NOTE: Confirm the USB connect setting is set to "Serialport" in the Set mode before using the USB cable. ([MENU] > SET > Function > **USB Connect**)

Icom and the Icom logo are registered trademarks of Icom Incorporated (Japan) in Japan, the United States, the United Kingdom, Germany, France, Spain, Russia, Australia, New Zealand, and/or other countries.

Microsoft and Windows are trademarks of the Microsoft group of companies.

All other products or brands are registered trademarks or trademarks of their respective holders.

About the licenses

This product includes "LibJpeg.Net" open source software, and is licensed according to the open source software license.

This product includes "Native-Floyd-Steinberg-Dithering" open source software, and is licensed according to the open source software license.

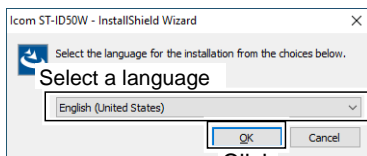
Refer to the "About the Licenses" page at the end of this manual for information on the open source software being used in this product.

Installation

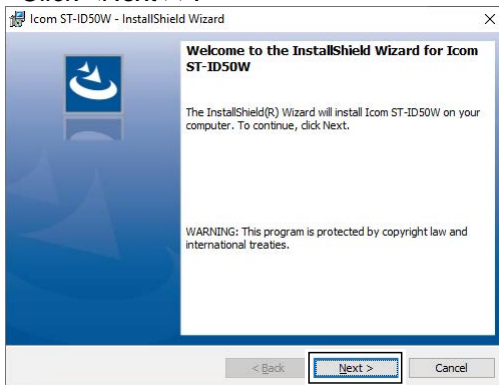
To install:

- Confirm Windows has completed its startup.
- Sign in as the **administrator**.
- Be sure no other applications are running.

1. Unzip the file downloaded from the Icom website.
(https://www.icomjapan.com/support/firmware_driver/)
2. Double-click the executable file in the unzipped folder.
① When “User Account Control” is displayed, click <Yes> to continue.
3. Select a language, and then click <OK>.

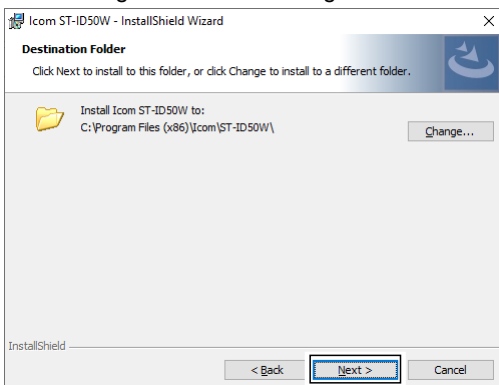


4. Click <Next >>.

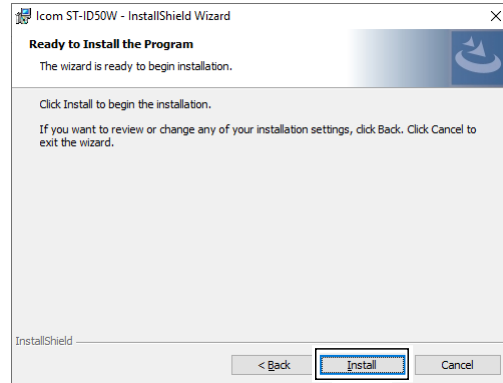


5. Click <Next >>.

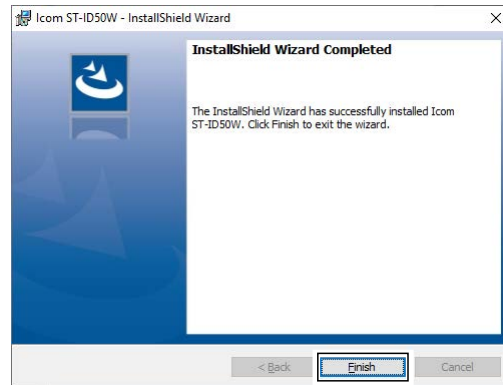
- ① To select another destination folder, click <Change...> before clicking <Next >>.



6. Click <Install>.



7. Click <Finish>.

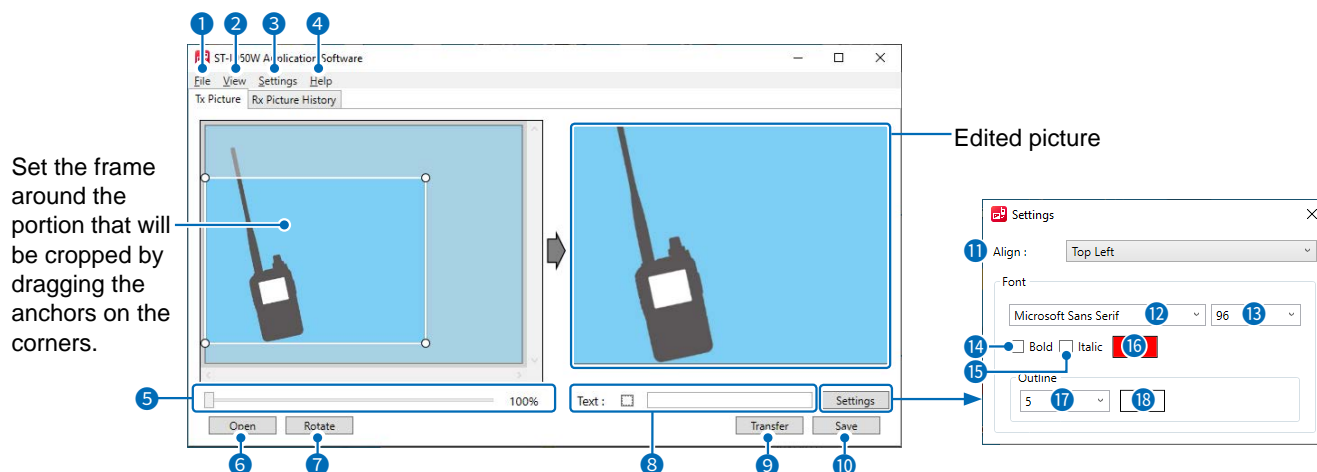


- The “ST-ID50W” file is created in the Windows Start menu, and a shortcut icon is created on the desktop.
① Double click the icon to open the software.



NOTE: To uninstall, use the “Apps & features” in the “System” menu.
To get started, click on Start > Settings > Apps > Apps & features.

Operating screen



◆ Top menu

1 File

Open (Ctrl+O):

Click to open a picture file.

Save (Ctrl+S):

Click to save the picture in the “jpg” and “dat” formats.

Exit:

Click to close the software.

2 View

Language:

Click to select the language to be displayed on the Language list screen.

3 Settings

Com Port:

Click to open the COM port number that the transceiver is connected to.

① Click “▼” to display the COM ports on a drop-down list.

① Click <Search> to search the COM port that the transceiver is connected to.

① See the “USB DRIVER INSTALLATION GUIDE” on the Icom website for details of checking the COM port number.

Auto Saving of TX Picture...:

Click to open the Auto Saving of TX Picture window.

① Enter a checkmark to the check box to automatically saves the transferred picture on the PC.

① You can change the destination to save the picture. The file name is automatically set in the following format: YYYYMMDD_hhmmss.jpg (YYYY: Year, MM: Month, DD: Day, hh: hour, mm: minute, ss: second)

4 Help

About:

Click to open the About window and displays the version number and license statements.

◆ TX Picture tab

Click to display the TX Picture Edit screen.

5 Zoom bar

Click to zoom in or zoom out the picture.

6 Open

Click to open the picture that you want to edit.

7 Rotate

Click to rotate the picture clockwise. The picture turns 90 degrees.

8 Text

Enter the text you want to add to the picture.

9 Transfer

Click to transfer the picture to the transceiver.

10 Save

Click to save the edited picture on the PC in the “jpg” and “dat” formats.

Settings:

Click to display a window to set the entered text.

11 Align

Select the display position of the text.

12 Font

Select the font.

13 Size

Select the font size of the text.

14 Bold

Select whether or not to make the text bold.

15 Italic

Select whether or not to make the text italic.

16 Color

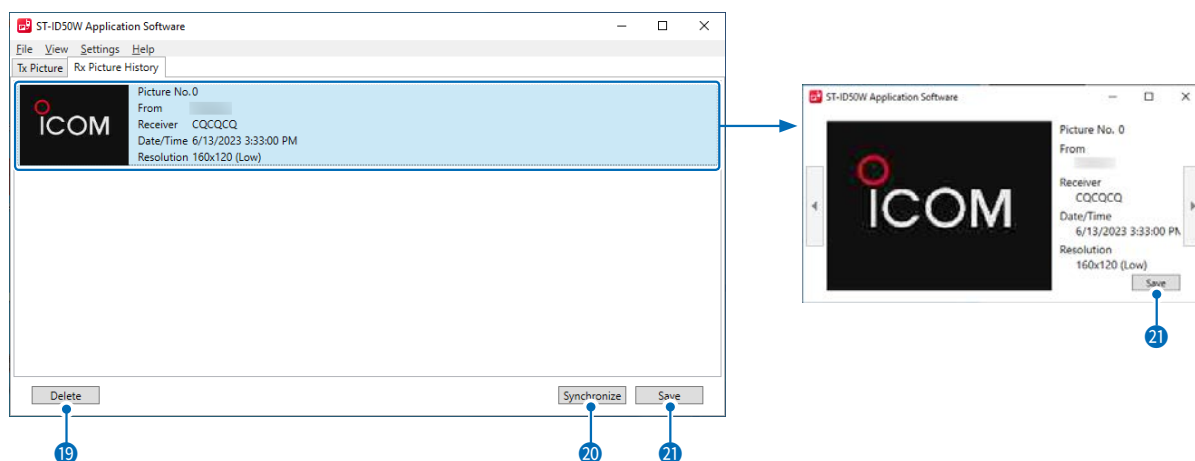
Select the text color.

17 Outline

Select the outline width of the text.

18 Outline Color

Select the outline color of the text.



◇ RX Picture History tab

Double-click on a history to display the Details window.

19 Delete

Click to delete the selected history.

① The received picture data on the microSD card is not deleted.

20 Synchronize

Click to load the received pictures from the transceiver.

① The transceiver saves only the latest 50 pictures. The older than that will be deleted. Load them into the PC before they are deleted, if necessary.

21 Save

Click to save the selected picture on the PC in the “jpg” format.

Operation

Cropping a picture

1. Select the TX Picture tab.
 - The Picture Transfer screen is displayed.
2. Click <Open>.
 - The Select Picture screen is displayed.
 - ① You can also select the picture by dragging and dropping it from a folder.
3. Select the picture to edit.
4. Set the frame around the portion that will be cropped by dragging the anchors on the corners.
 - The edited picture is displayed on the right side.

Adding a text to the picture

1. Select the TX Picture tab.
 - The Picture Transfer screen is displayed.
2. Enter a text.
 - ① Enter a checkmark to the check box on the left side of the text box.
3. Click <Settings>.
4. Set the text font, size, color, and so on.
 - ① See page 3 for the details.

Saving the picture on the PC

1. Select the TX Picture tab.
 - The Picture Transfer screen is displayed.
2. Click <Save>.
 - The Save as window is displayed.
3. Select the destination to save the picture.
 - ① The picture is saved in the “jpg” and “dat” formats.
 - ① The software automatically saves the transferred picture if “Auto Saving of TX Picture” is enabled (p. 3).

TIP: Saving the “dat” format file to the “Picture” folder in the microSD card enables selecting the picture on the transceiver.

Transferring the picture to the transceiver

1. Select the TX Picture tab.
 - The Picture Transfer screen is displayed.
2. Click <Transfer>.
 - The Send Picture window is displayed.
 - ① Rename the file name, if necessary.
 - ① If you change the file name, enter one of up to 23 characters.
3. Click <OK> to transfer the picture.
 - While transferring, the status is displayed.
 - ① To cancel transfer, click <Cancel>.

Loading the received pictures from the transceiver

To view the received pictures, load them into the software.

- ① The received picture cannot be displayed on the transceiver.
1. Select the RX Picture History tab.
 - The Received Picture screen is displayed.
 2. Click <Synchronize>.
 3. Click <OK> on the confirmation dialog to start loading.
 - The status is displayed while loading.
 - ① To cancel loading, click <Cancel>.
 - ① The transceiver saves only the latest 50 pictures. The older than that will be deleted. Load them into the PC before they are deleted, if necessary.
 - ① The transceiver cannot receive a picture while loading received pictures.
 4. Click <OK> on the dialog.
 - The loaded pictures are displayed.

Saving the received picture to the PC

1. Double-click to select a picture to save.
 - The received picture detail is displayed.
2. Click <Save>.
 - The Save as window is displayed.
3. Select the destination to save the picture.
 - ① The file name is automatically set in the following format: PicYYYYMMDD_“The caller’s call sign”.jpg (YYYY: Year, MM: Month, DD: Day).

NOTE:

If you cannot transfer the picture, check the following:

On the transceiver:

- The transceiver is turned ON.
- The transceiver’s firmware is the latest version.
- A microSD card is inserted into the transceiver.
- The transceiver is in a normal operating mode.
 - ① The transceiver cannot receive the picture in special modes, such as the clone mode, firmware update mode, import or export mode, or setting save mode.
- “USB Connect” in the Set mode is set to “Serialport.”
([MENU] > SET > Function > **USB Connect**)

On the PC:

- The transceiver is connected through the USB cable.
- The COM port number that the transceiver is connected to is selected.

USB cable:

- The cable is usable for data transfer and not for charging only.

About the licenses

LibJpeg.Net

Copyright (c) 2008-2018, Bit Miracle

All rights reserved.

Redistribution and use in source and binary forms, with or without modification, are permitted provided that the following conditions are met:

- Redistributions of source code must retain the above copyright notice, this list of conditions and the following disclaimer.
- Redistributions in binary form must reproduce the above copyright notice, this list of conditions and the following disclaimer in the documentation and/or other materials provided with the distribution.
- Neither the name of the Bit Miracle nor the names of its contributors may be used to endorse or promote products derived from this software without specific prior written permission.

THIS SOFTWARE IS PROVIDED BY THE COPYRIGHT HOLDERS AND CONTRIBUTORS "AS IS" AND ANY EXPRESS OR IMPLIED WARRANTIES, INCLUDING, BUT NOT LIMITED TO, THE IMPLIED WARRANTIES OF MERCHANTABILITY AND FITNESS FOR A PARTICULAR PURPOSE ARE DISCLAIMED. IN NO EVENT SHALL BIT MIRACLE BE LIABLE FOR ANY DIRECT, INDIRECT, INCIDENTAL, SPECIAL, EXEMPLARY, OR CONSEQUENTIAL DAMAGES (INCLUDING, BUT NOT LIMITED TO, PROCUREMENT OF SUBSTITUTE GOODS OR SERVICES; LOSS OF USE, DATA, OR PROFITS; OR BUSINESS INTERRUPTION) HOWEVER CAUSED AND ON ANY THEORY OF LIABILITY, WHETHER IN CONTRACT, STRICT LIABILITY, OR TORT (INCLUDING NEGLIGENCE OR OTHERWISE) ARISING IN ANY WAY OUT OF THE USE OF THIS SOFTWARE, EVEN IF ADVISED OF THE POSSIBILITY OF SUCH DAMAGE.

NOTE:

This software is based in part on the
The Independent JPEG Group's JPEG software

<http://www.ijg.org/>

Copyright (C) 1991-1998, Thomas G. Lane.

Native-Floyd-Steinberg-Dithering

MIT License
Copyright (c) 2018 Jeffrey Liu

Permission is hereby granted, free of charge, to any person obtaining a copy of this software and associated documentation files (the "Software"), to deal in the Software without restriction, including without limitation the rights to use, copy, modify, merge, publish, distribute, sublicense, and/or sell copies of the Software, and to permit persons to whom the Software is furnished to do so, subject to the following conditions:

The above copyright notice and this permission notice shall be included in all copies or substantial portions of the Software.

THE SOFTWARE IS PROVIDED "AS IS", WITHOUT WARRANTY OF ANY KIND, EXPRESS OR IMPLIED, INCLUDING BUT NOT LIMITED TO THE WARRANTIES OF MERCHANTABILITY, FITNESS FOR A PARTICULAR PURPOSE AND NONINFRINGEMENT. IN NO EVENT SHALL THE AUTHORS OR COPYRIGHT HOLDERS BE LIABLE FOR ANY CLAIM, DAMAGES OR OTHER LIABILITY, WHETHER IN AN ACTION OF CONTRACT, TORT OR OTHERWISE, ARISING FROM, OUT OF OR IN CONNECTION WITH THE SOFTWARE OR THE USE OR OTHER DEALINGS IN THE SOFTWARE.